

Supplementary Materials

IFI16 Induced by Direct Interaction between Esophageal Squamous Cell Carcinomas and Macrophages Promotes Tumor Progression via Secretion of IL-1 α

Yuki Azumi, Yu-ichiro Koma, Shuichi Tsukamoto, Yu Kitamura, Nobuaki Ishihara, Keitaro Yamanaka, Takashi Nakanishi, Shoji Miyako, Satoshi Urakami, Kohei Tanigawa, Takayuki Kodama, Mari Nishio, Manabu Shigeoka, Yoshihiro Kakeji, Hiroshi Yokozaki

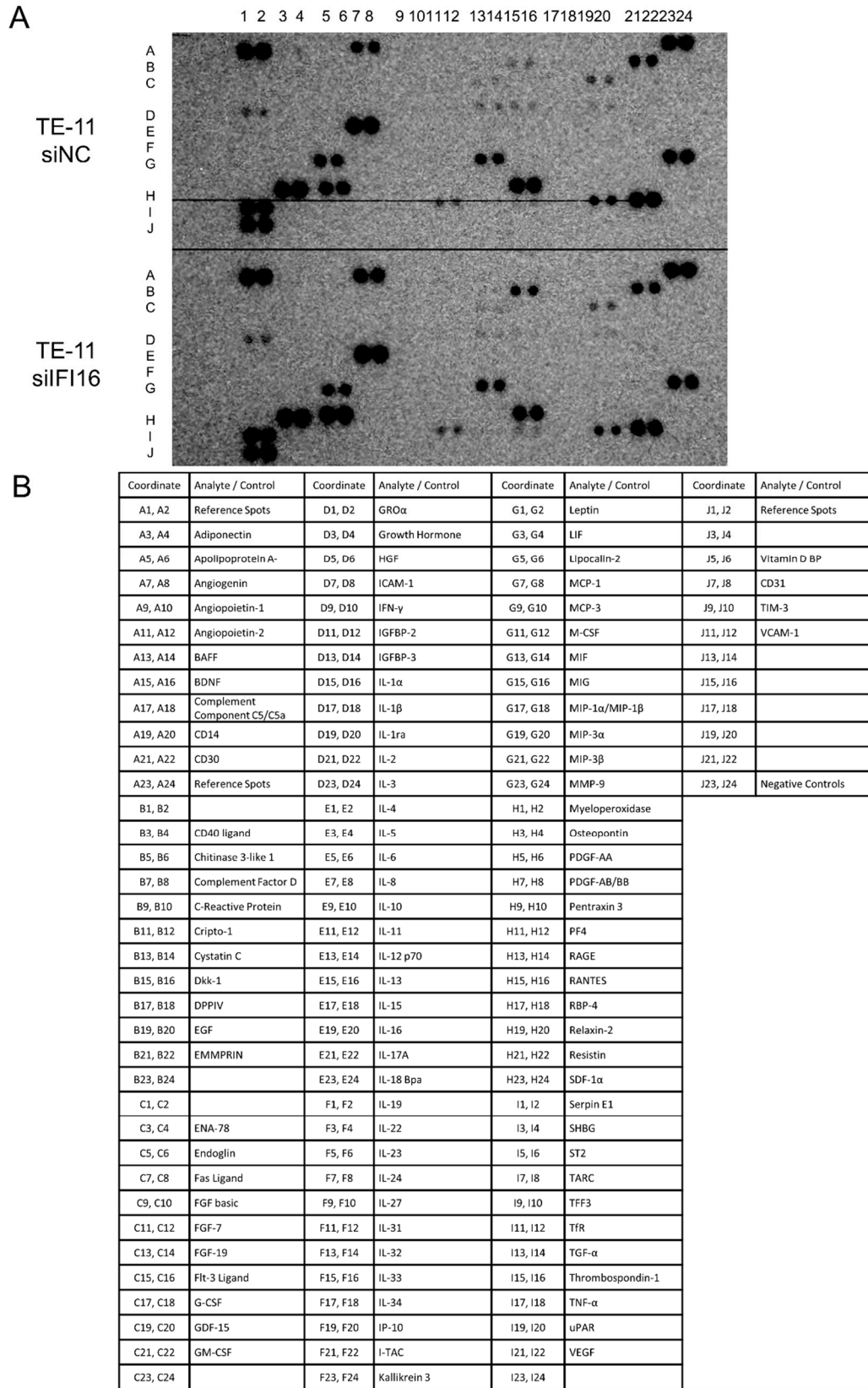


Figure S1. (A) Cytokine array results of supernatants from TE-11 cells transfected with siNC (upper panel) and siIFI16 (lower panel). (B) Coordinates of the cytokine array.

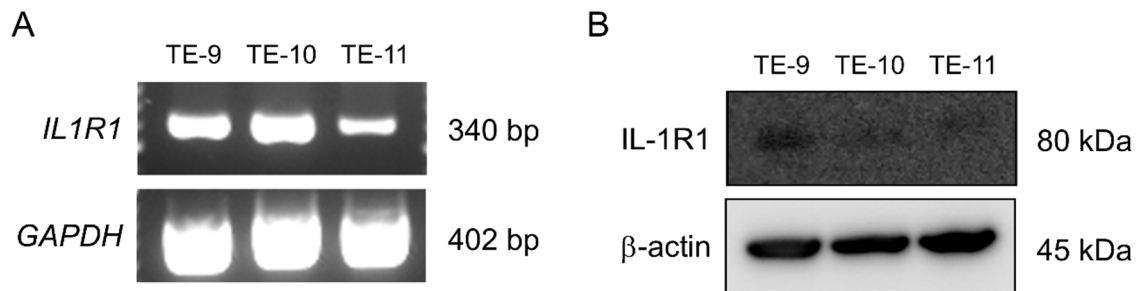


Figure S2. Expression levels of IL-1R1 in ESCC cells. (A, B) The expression of IL-1R1 was confirmed by RT-PCR (A) and Western blotting (B). *GAPDH* and β -actin was used as internal control in RT-PCR and Western blotting, respectively.

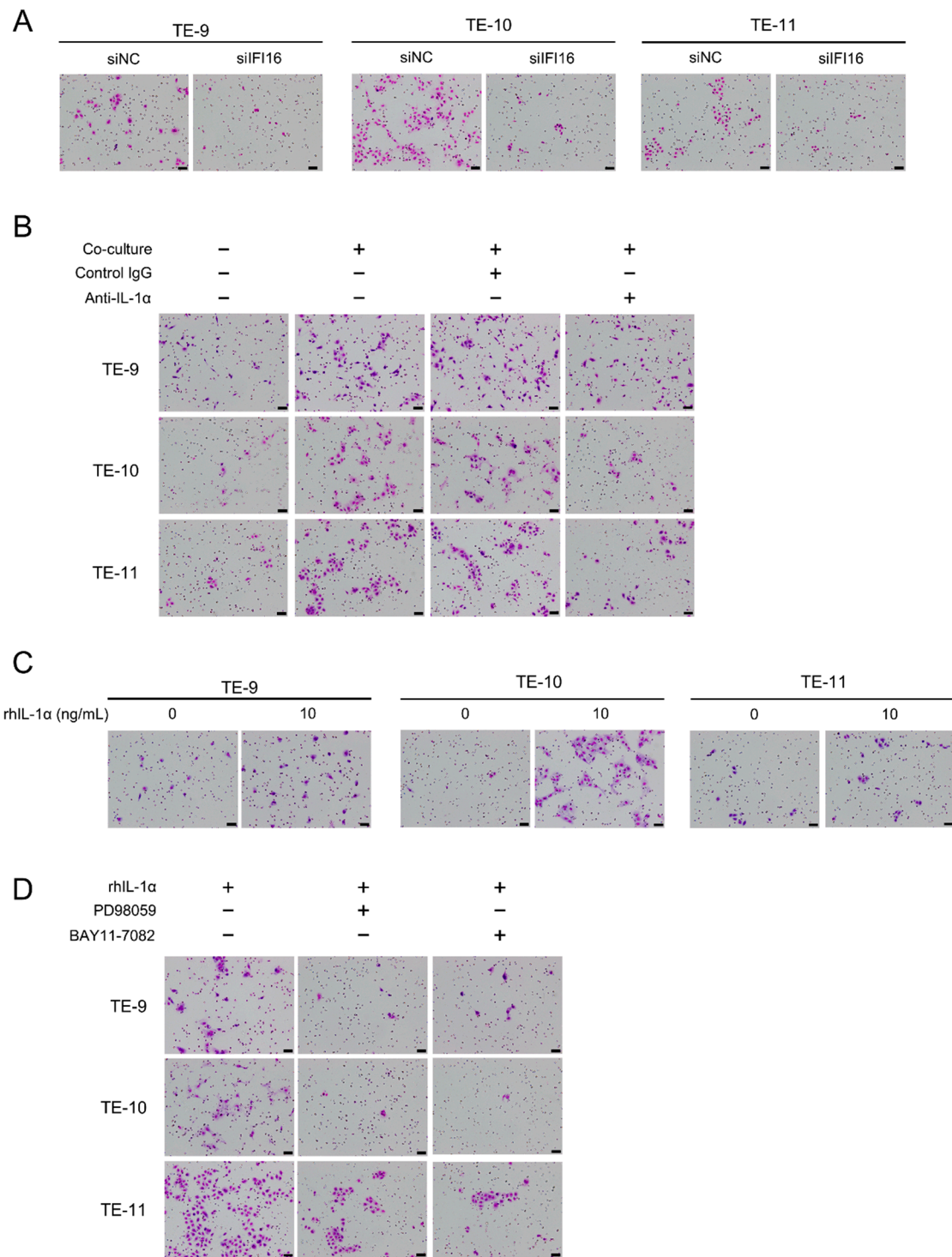
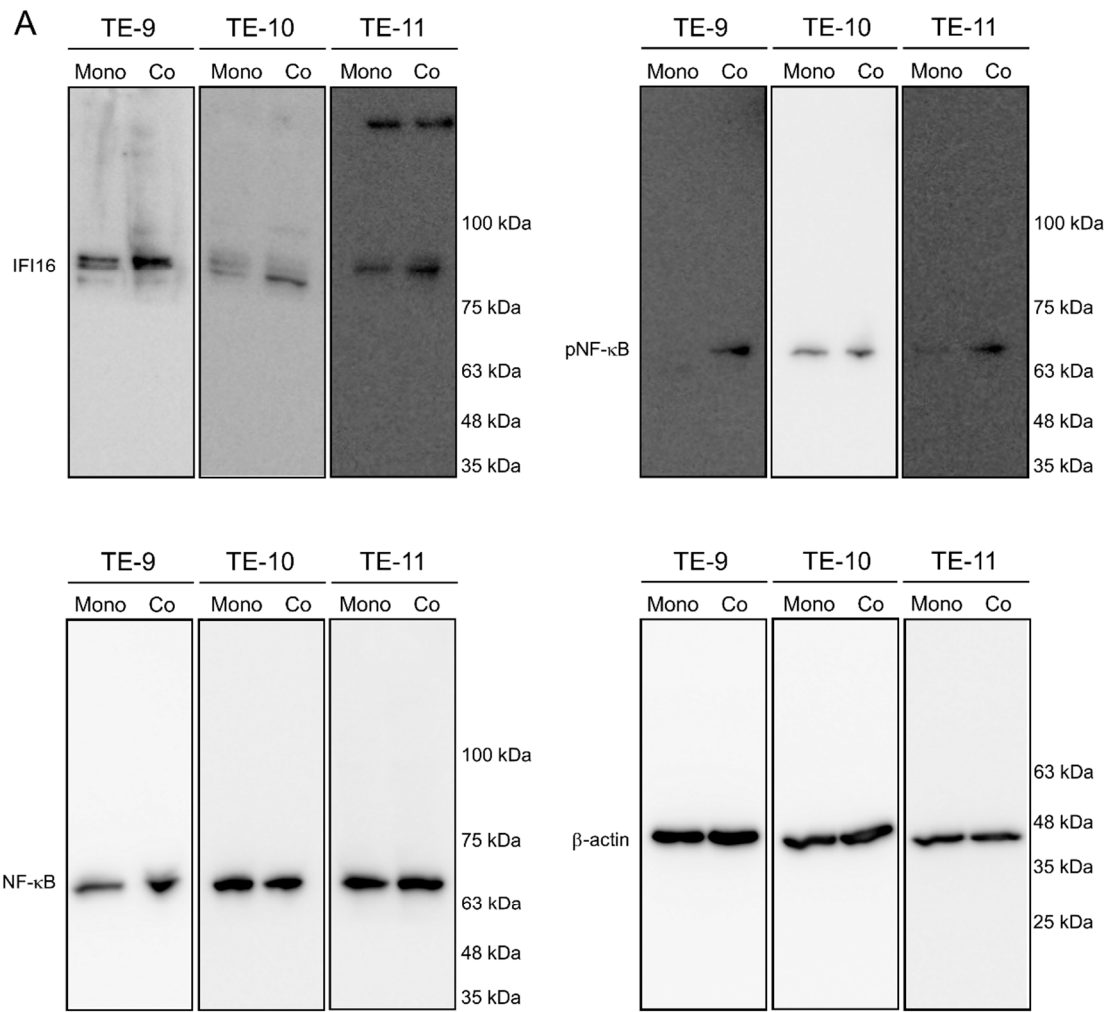
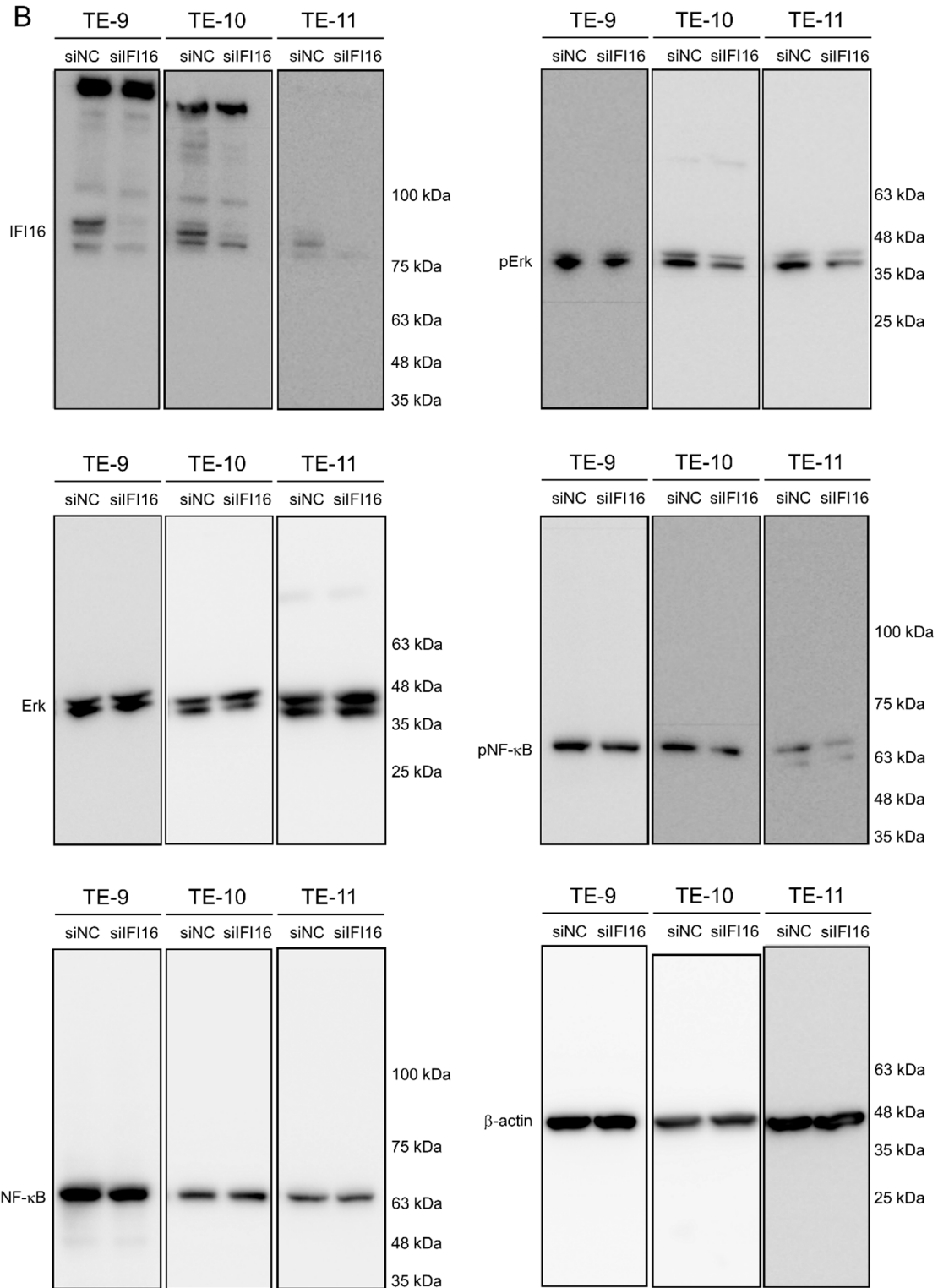
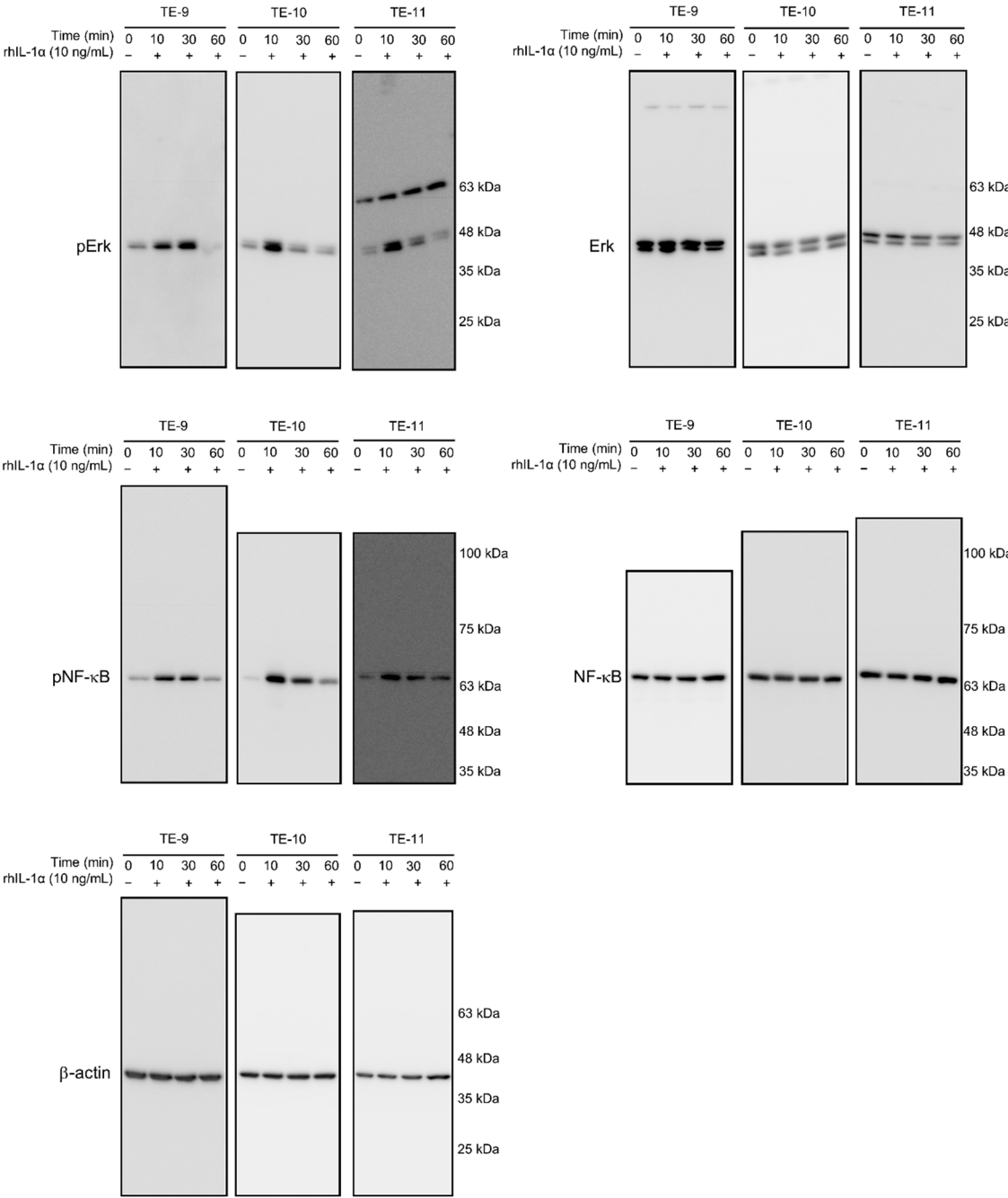


Figure S3. Representative images ($\times 200$) of migration assays in Figures 2E, 3F, 4C, and 4G, corresponding to Figures S3A–D, respectively. Scale bar: 50 μ m.



B

C



D

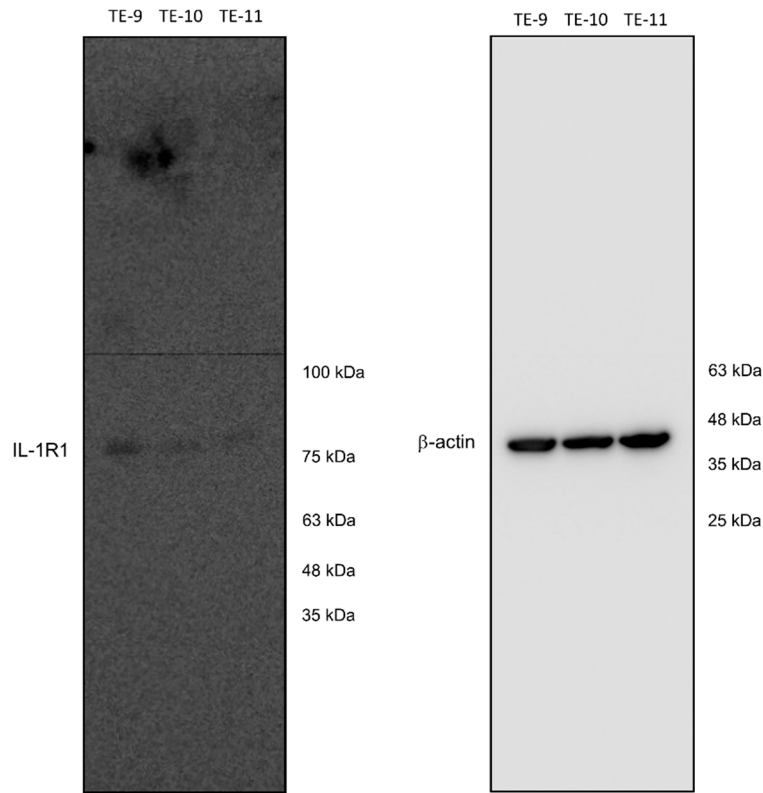


Figure S4. Raw images of Western blotting from Figures 1B, 2B, 4D, and S2B, corresponding to Figures S4A–D, respectively. The markers were not visualized in the raw membrane data because three colored pre-stained markers without chemiluminescent substances were used.